

Downloading Eclipse

Parts of this handout were written by Justin Manus and Brandon Burr and then wantonly updated by your loving CS106A staff.

In CS106A, we'll be using Stanford's customized version of Eclipse to build our programs. Eclipse is an enormously popular industrial strength Java environment with many features. Fortunately, Eclipse is also open source—anyone is free to change Eclipse to work the way they want. We have taken advantage of that freedom to install special Stanford features into Eclipse, tailoring it specifically for CS106A. This document gives instructions on how to get starting using Stanford Eclipse. If you run into any trouble installing Eclipse, email the head TA, Jeremy Keeshin (jkeeshin@stanford.edu).

Installing Eclipse on a Mac

The version of Eclipse that you download for the Mac depends on which version of Mac OS X you have. If you don't know which version of Mac OS X you have, you can check by clicking the Apple menu in the upper left-hand corner of the screen and selecting **About This Mac**. Stanford Eclipse will only work on Mac OS X version 10.4 or higher. If you don't have that version of the operating system (or you are running OS 9), you'll need to either upgrade or do your class work in a public cluster.

1. **Get Eclipse from the CS 106A website.** Before you begin to write your first Java or Karel program, you will need to obtain a copy of Eclipse from the CS106A course website. To do so, go to <http://cs106a.stanford.edu>, then click on the “Software” link at the top of the page. Then, depending on the version of Mac OS X you have, click on one of the links to get Stanford Eclipse as follows:
 - a) If you are running Mac OS X 10.5 (or later), click on **Stanford Eclipse for Macintosh OS 10.5-10.7**.
 - b) If you are running Mac OS X 10.4, click on **Stanford Eclipse for Macintosh OS 10.4**.

In either case, save the file to somewhere on your hard drive (or it may automatically get saved to your Desktop).

2. Install Eclipse.

- a) After Step 1, you should now have a file saved on your computer that is named either `eclipse-ganymede-mac.zip` (Mac OS X 10.4) or `eclipse-helios-mac.zip` (Mac OS X 10.5-10.7).
 - b) Double click on the zip file to unarchive eclipse. This will create a new folder. We'll refer to this new folder as the eclipse folder.
 - c) Drag the eclipse folder into the Applications folder on your Mac.
3. **Create a shortcut.** Open the eclipse folder (the one you just dragged into the Applications folder), and drag the square Eclipse icon to your dock.
 4. **Make sure you have a recent version of Java (version 1.6 or higher).** Most recently-purchased Macs will come with Java version 1.6 (or higher) pre-installed. To make sure you have the latest version, select the Software Update item under the Apple menu. If the update program determines that you need to upgrade to the most recent version of Java, follow the instructions for doing so.

Installing Eclipse in Windows

Our version of Eclipse will run on Windows XP, Vista, and Windows 7. If you have an older version of Windows on your computer, you will need to do your class work in one of the public computer clusters. Before installing Eclipse, you will first need to have a copy of the latest version of the Java JRE (Java Runtime Environment) installed on your computer. Note that Java version 1.6 is the latest version of Java. If you don't know which version, if any, of the JRE you have, or want to upgrade to the latest version, just start at Step 1. We recommend most students at Step 1.

1. **Uninstall previous versions of the JRE.** Before installing a new version of the JRE, we recommend that you remove any older copies that may be installed on your system.
 - a) Open the control panel by clicking on **Start**, then **Settings**, then **Control Panel**
 - b) Select the **Add or Remove Programs** (on XP) option or the **Programs and Features** option (on Vista and Windows 7)
 - c) From the list of programs you see, remove/uninstall any occurrences of Java/J2SE Runtime Environment, Java SDK, or Java Update. Note that the exact program name may be slightly different or include a version number, but you generally want to remove anything that includes the text: Java/J2SE Runtime Environment, Java SDK, or Java Update. To remove a program, click on the program name to highlight it and click the **Remove** button (XP) or the **Uninstall** button (Vista, Windows 7).

2. **Get the JRE from the CS106A website.**
 - a) You can obtain a copy of the Java JRE version 1.6 from the CS106A website: <http://cs106a.stanford.edu>. Click on the **Software** section link (at the top of the page) and then click on the **Java 1.6 JRE installer for the PC** link.
 - b) After clicking this link a prompt will appear to ask you whether you want to run or save the file. Click **Run** to begin the download and installation process. If a subsequent security warning dialog box appears, click **Run** (or **Yes**) to continue with the installation.
 - c) The Java JRE installation program should begin. Do a **Typical** installation, and follow the rest of the instructions given in order to complete your installation.

3. **Get Eclipse from the CS 106A website.** Before you begin to write your first Java or Karel program, you will need to obtain a copy of Eclipse from the CS 106A course website. To do so, go to <http://cs106a.stanford.edu>, click on the Software section link (at the top of the page) and then click on **Stanford Eclipse for Windows**, and save the file to somewhere on your hard drive. This may take a little while as the file being downloaded is rather large. Important note: make sure to get the current (most recent) version of Eclipse from CS106A website. If you have a previous version of Eclipse installed on your machine, it will not function properly, and you should download the current version.

4. **Install Eclipse.** Unzip/extract the contents of the file by right-clicking on the folder you just downloaded (which is named **eclipse-helios-windows**), selecting the **Extract All...** option and typing **C:\Program Files\Eclipse** as the location to extract the files to. Note that you may need to create a new folder located at **C:\Program Files\Eclipse** prior to performing the unzip/extract. Then continue following the steps in the extraction process. (Note: if your version of Windows does not have built-in support for unzipping/extracting programs, you can obtain a program to unzip/extract files at <http://www.winzip.com>.)

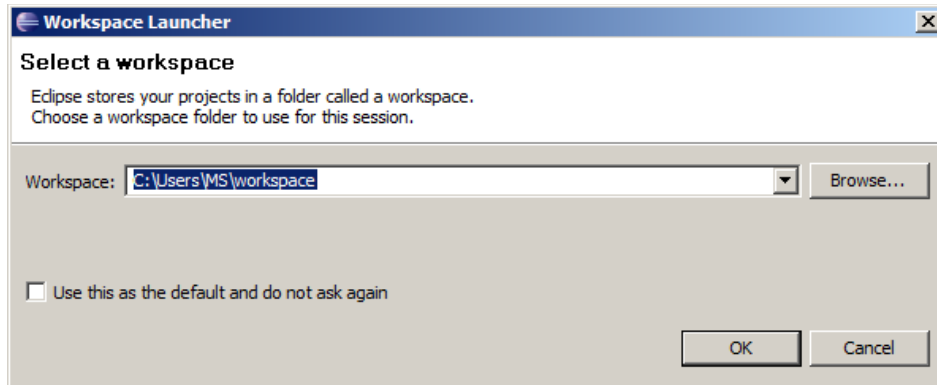
(continued)

5. **Create a shortcut.** After extracting Eclipse, you can then create a shortcut for easy access to the program.

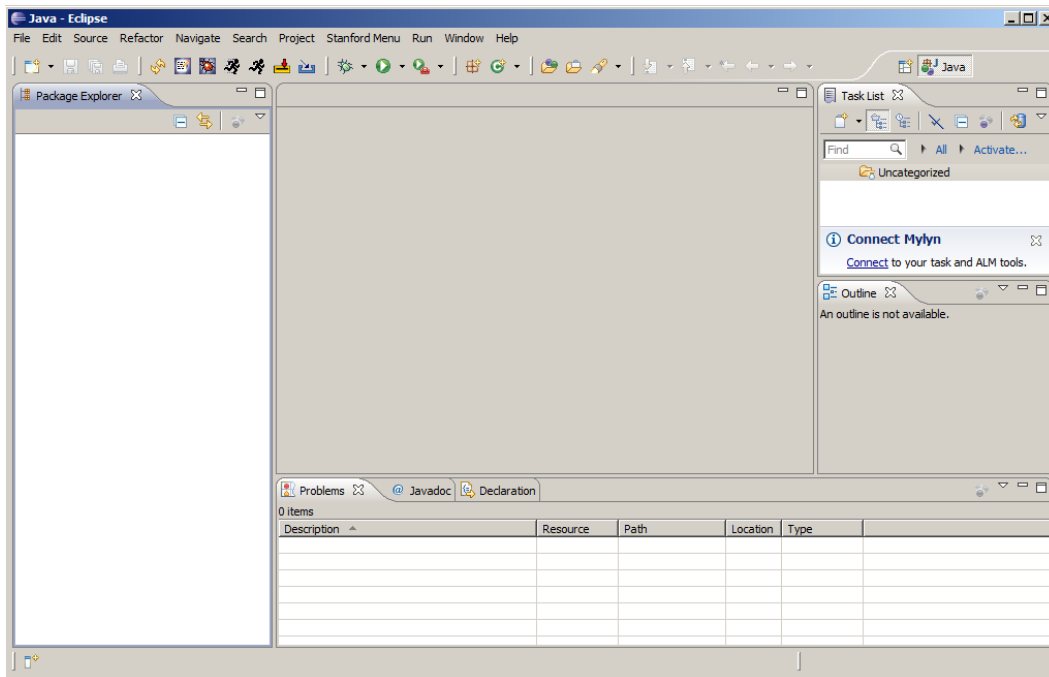
- a) Open the **C:\Program Files\Eclipse\eclipse** directory
- b) Right-click and drag the **eclipse.exe** file (the Eclipse application) to your desktop and then select the option **Create shortcut here**.

Running Eclipse

At this point you should have Eclipse installed and working on your computer. When you run eclipse for the first time, you may get a screen that looks like this:



A workspace is just a directory that Eclipse will use to place new projects in. In 106A you won't have to make any new projects from scratch. We will always give you skeleton projects for your assignments, so you don't need to worry about where the workspace is. The suggested location is fine. Click the **Use this as the default and do not ask again** checkbox, and then click **OK**. Once you do, Eclipse will start running and—after what may seem like a relatively long time—bring up a screen that looks like this (it may look slightly different on the Mac):



The layout of the screen—which the Eclipse designers decided to call a **perspective**—corresponds to the Stanford Editor perspective, which is where you will want to start editing your programs. Because Eclipse is a professional tool, it contains many advanced features that only get in the way in an introductory course. The purpose of the Stanford Editor perspective is to hide all the scary-looking features that you don't need. If you ever find yourself in a perspective that seems confusing, click on **Stanford Menu** in the menu bar and then select **Editor**. You can also click on the **Editor** button from the main toolbar, which looks like this:



Once you have Eclipse loaded, your next step will usually be to create a new project in your workspace by importing a skeletal framework that we provide called a **starter project**. Using starter projects make your life much easier by allowing you to ignore the many details involved in creating a project from scratch. Every assignment will include a starter project for each problem, and your first task will be to download the starter project from the class website and then importing it into your workspace. The details for doing so are described in the handout "Using Karel with Eclipse".